



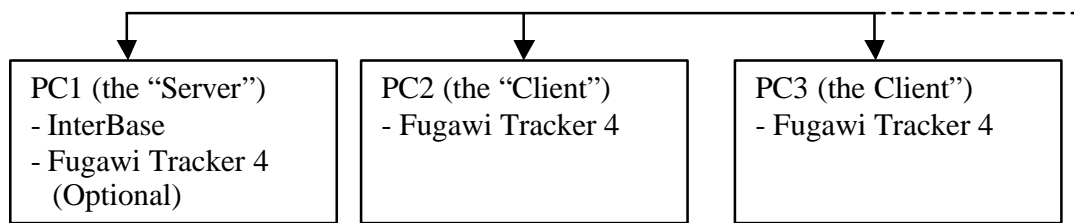
Fugawi Tracker 4

TECHNICAL INTERFACES DOCUMENTATION

NETWORKING THE DATABASE

21 September 2004 - rev. 0

Fugawi Tracker 4™ uses Borland® InterBase version 6 to store and manage Assets and Positions. Fugawi Tracker 4 can be configured in a network, in which case one computer hosts the Borland InterBase Server while the other computers, which have Fugawi Tracker 4 installed locally, connect to the Server computer. The Server computer can also have a copy of Fugawi Tracker 4 installed, which will connect to the local InterBase server.

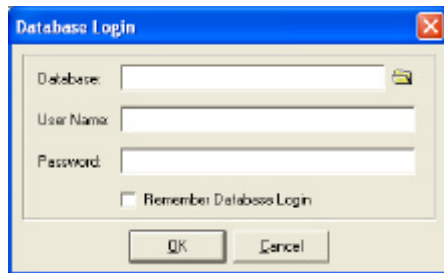


A LAN or WAN must connect the computers and be networked using TCP/IP, NetBEUI, or SPX.

Each computer that will have Fugawi Tracker 4 installed must have a license of Fugawi Tracker 4 and a hardware key (Dongle) connected to the parallel or USB port.

To configure Fugawi Tracker 4 to work in the network:

1. Install Fugawi Tracker 4 on each computer and accept all defaults.
2. Install InterBase 6 on the computer that will act as a server and accept all defaults. (The InterBase 6 install is included on the Fugawi Tracker 4 installation CD.)
3. By default, FugawiTracker will install the Tracker database on the Server computer as **C:\Program Files\Common Files\Fugawi\Tracker\tracker.gdb**.
4. Fugawi Tracker 4 on the server PC will log into the Tracker database by default.
5. To connect to the Tracker database from other computers:
 - a. Find the Computer Name of the Server computer. This can be found by opening **Widows Control Panel**, selecting **Systems** and then **Computer Name**. Note the name shown in the **Full Computer Name** field, in this sample case; assume it is named "**PC1**".
 - b. Open Fugawi Tracker on PC2. A database logon screen will open as follows:



c. Complete the database path as follows:

If the network supports TCP/IP

<server_name>:<complete path to local tracker.gdb file>
 e.g. PC1:C:\Program Files\Common Files\Fugawi\Tracker\tracker.gdb

If the network supports NetBEUI

\\<server_name>\<complete path to local tracker.gdb file>
 e.g. \\PC1\C:\Program Files\Common Files\Fugawi\Tracker\tracker.gdb

If the network supports SPX

<server_name>@<complete path to local tracker.gdb file>
 e.g. PC1@C:\Program Files\Common Files\Fugawi\Tracker\tracker.gdb

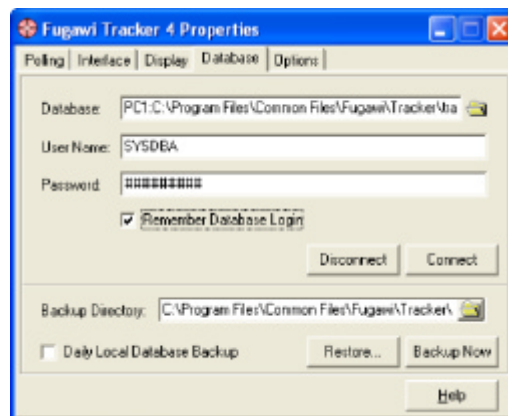
NOTE: The path provided after the PC name is the LOCAL PATH on the Server PC. Do not use a shared drive path.

d. Complete the User Name and Password as **SYSDBA** and **masterkey** respectively (these are defaults and can be changed later) and click OK.

e. Repeat steps b to d for all remaining computers running Fugawi Tracker 4.

Changing the path to the database

When Fugawi Tracker 4 is running, you can change the path to the Database from the menu by selecting **Settings|Interface** and then clicking on the **Database** Tab.



Note for Windows XP service Pack 2

Windows XP SP2 turns on the Windows firewall and disables all ports by default.

The InterBase Server requires port 3050 for connections from remote computers.

When you install Windows XP SP2, it turns on Windows firewall and disables all ports by default. To allow the InterBase Server to be accessed from a remote computer you will need to either turn off the Windows firewall, or enable port 3050. Not doing so results in the error "Unable to complete network request to host".

Windows XP SP2 adds a new control panel called Windows Firewall.

To turn off the Windows firewall is quite straight forward, just select the radio button from the control panel. However, most users will probably just want to enable port 3050. To enable port 3050, select the Exceptions tab from the Windows Firewall control panel.

Next, click Add Port. You can enter any name you want, but InterBase Server is probably what you will want. Enter a port number of 3050.

Click OK 2 times and connections to InterBase should work. No need to reboot. Note that you may need to make these changes on the server and the client.