



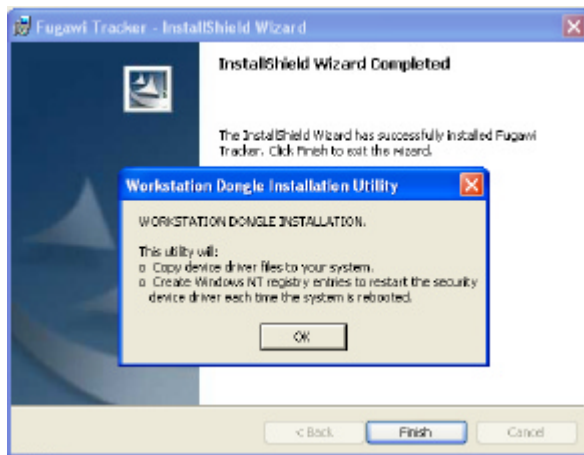
Fugawi Tracker 4

INSTALLATION OF THE USB DONGLE

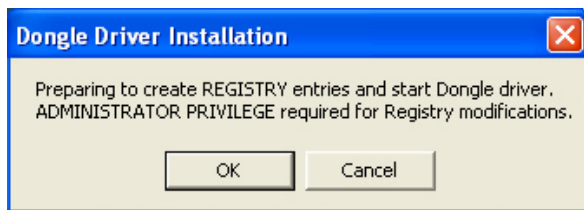
March 2006

If your version of Fugawi Tracker was supplied with a USB dongle (a green software security key), rather than a serial dongle (a grey parallel port software security key) ---- **please note the following important changes to the installation procedure.**

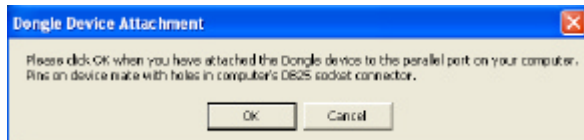
1. Near the end of the Fugawi Tracker installation, you will be confronted with the following screen. **Click OK.**



2. You will then see the following screen. **Click Cancel.**



3. You will see the following screen. **Click Cancel.**



4. You will see the following screen. **Click OK.**

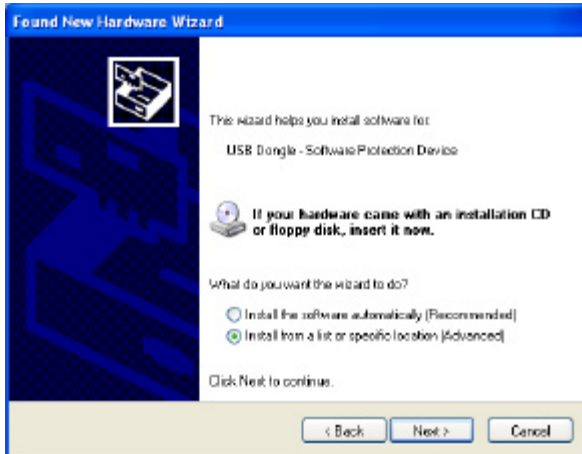


You HAVE NOW CANCELLED OUT OF THE TRACKER DONGLE INSTALLATION UTILITY.

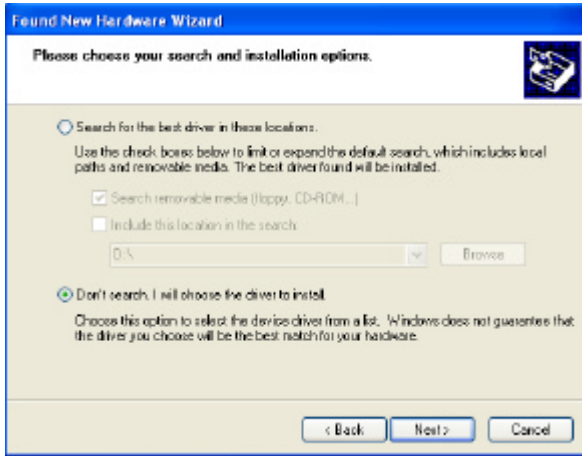
5. Now, insert the USB dongle into a USB port on the PC. Windows XP will automatically detect the USB dongle and bring up the following screen. Select “No, not at this time” and **Click Next.**



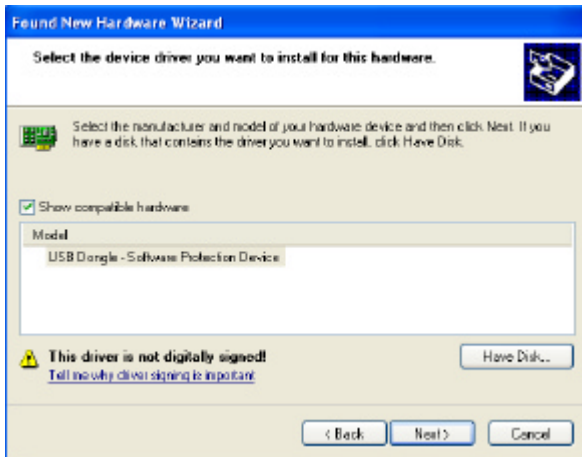
6. On the following screen, select “Install from a list or specific location (Advanced)” and **Click Next.**



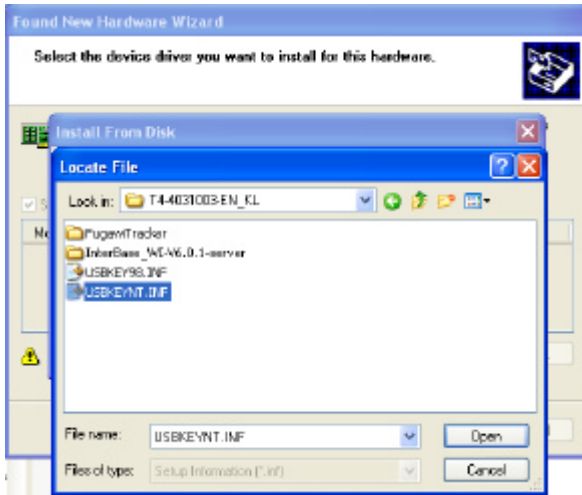
7. The following screen will appear. Select “Don’t Search, I will choose the driver to install” and **Click Next**.



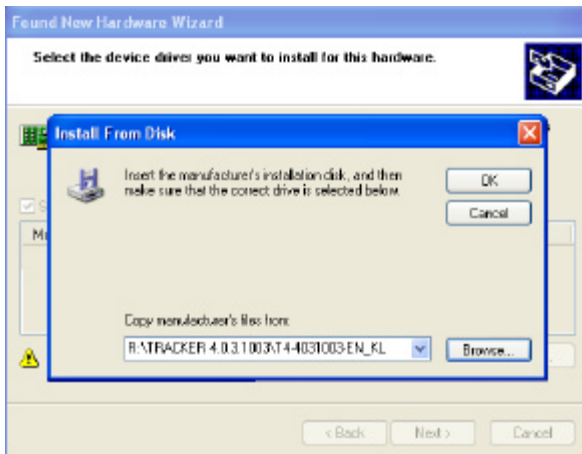
8. On the following screen, **click “Have Disk”**



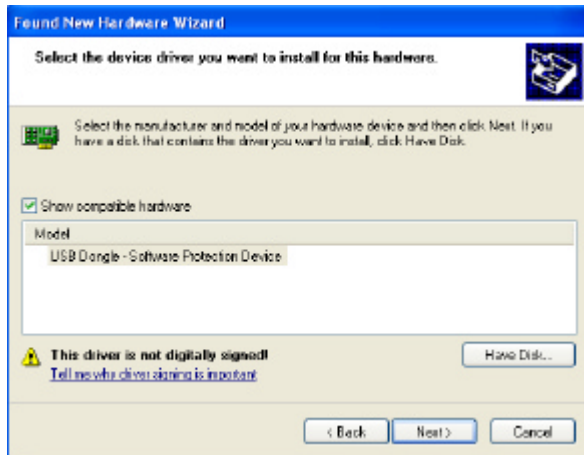
9. This will bring up a file browser window. Ensure that the Tracker installation CD is in your CD drive, then browse to the file USBKEYNT.INF. Select the file, then **Click Open**.



10. You will then see the following screen. **Click OK**



11. you will now be returned to this screen. **Click next.**



12. The driver will now be installed. **Click Finish and you are done.**

